

RAFE B. EVANS
Vice President

WEST VILLAGE OFFICE SPACE

Space Facts

<i>Space Address</i>	112 Charles Street, Corner of Hudson Street
<i>Neighborhood</i>	West Village
<i>Approximate Size</i>	11,062 sf + 300 sf private gf vestibule
<i>Rent</i>	\$48 psf + \$1.60 CAM
<i>Possession</i>	January 2012

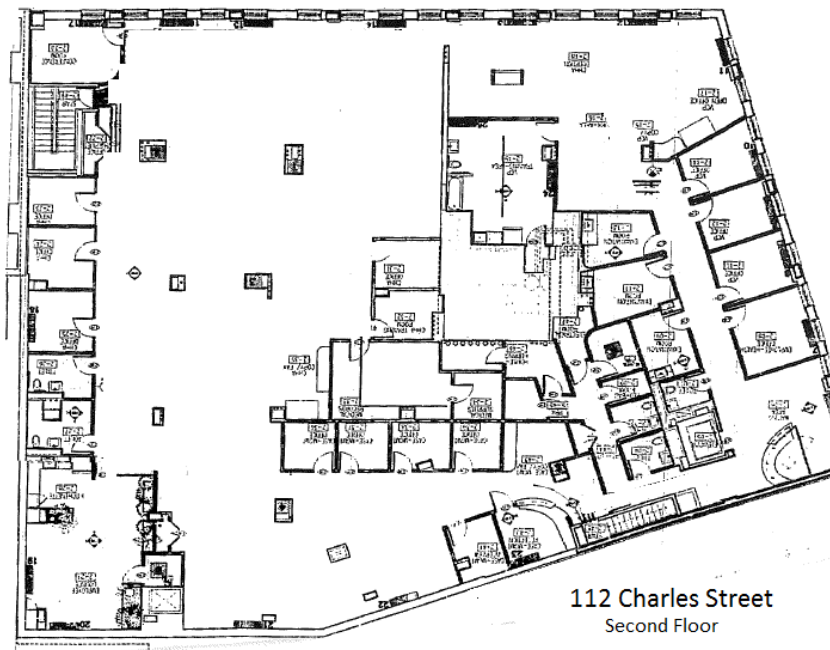
Note

- Prime Location
- Private Sidewalk Entrance and Elevator
- Abundant Natural Light from all four sides
- 18 Offices, 5 bathrooms, 3 Conference Rooms, Large Open Area, Cafeteria
- Community Facility Space: Medical, Educational, NFP etc.

Contact

Rafe B. Evans

212-712-6186



ALL INFORMATION IS SUBJECT TO, ERRORS, OMISSIONS, CHANGE, OR WITHDRAWAL WITHOUT NOTICE. Dimensions are approximate.
One half of a commission is payable in accordance with our rate schedule to procuring broker executing our brokerage agreement, provided that a lease is fully consummated as described in said agreement. Our commission rate schedule is available upon request.



Looking West On Charles Toward Hudson

