

RAFE B. EVANS
Vice President

Chelsea Catering Hall / Event Space

Space Facts

<i>Space Address</i>	537 W. 27th St, between 10 th and 11 th Avenue
<i>Neighborhood</i>	Chelsea
<i>Approximate Size</i>	12,813 sf lower level 878 sf grade level entry Frontage: 14.5 feet Additional 2,476 sf available Frontage: 34 feet
<i>Ceiling Height</i>	16-18 feet
<i>Rent</i>	\$750,000 pa
<i>Possession</i>	January, 2011

Note

- Brand new construction
- Lower level, mostly column free
- Fully vented, raised floor kitchen
- Private street level entrance with dedicated elevator
- Public assembly of 725
- Steps from High Line Park

Contact

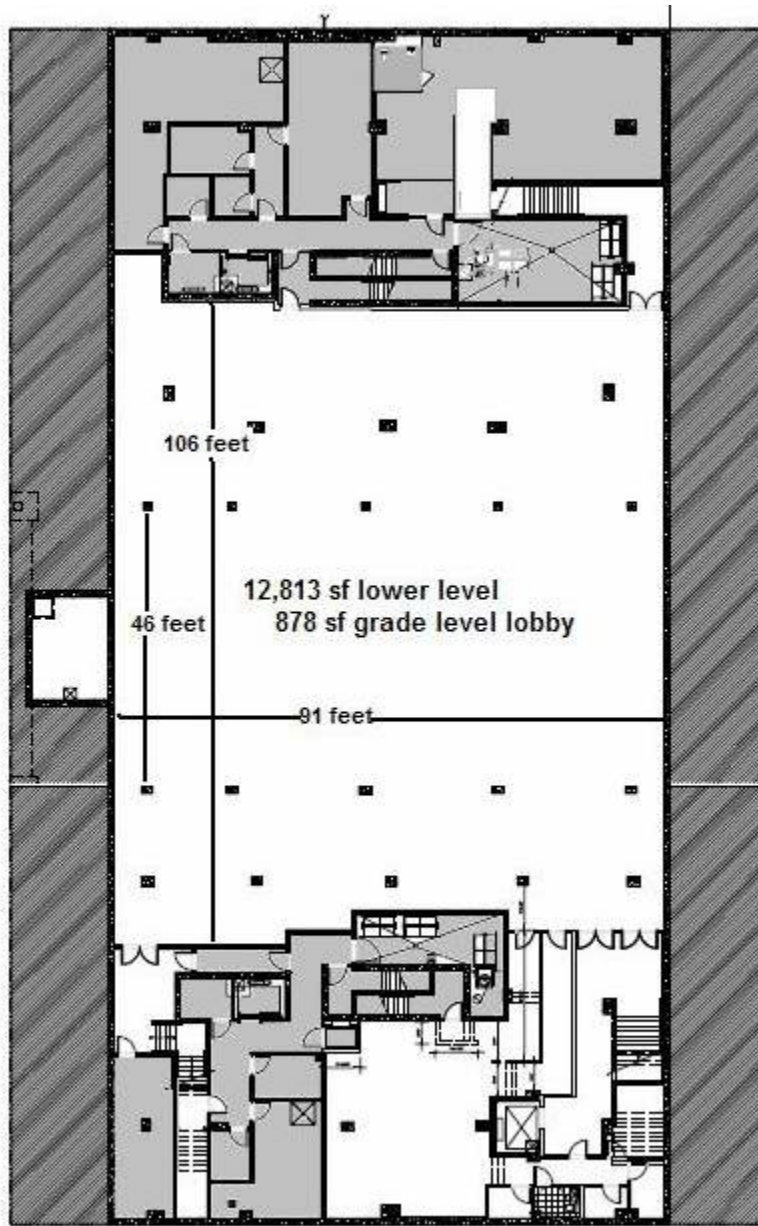
Rafe B. Evans

212-712-6186



ALL INFORMATION IS SUBJECT TO, ERRORS, OMISSIONS, CHANGE, OR WITHDRAWAL WITHOUT NOTICE. Dimensions are approximate. One half of a commission is payable in accordance with our rate schedule to procuring broker executing our brokerage agreement, provided that a lease is fully consummated as described in said agreement. Our commission rate schedule is available upon request. This listing is a co-exclusive with Picken Real Estate.

101 West 70th Street • New York, NY 10023 • 212 712.6186
Cell 917 701.4059 • rafeevans@walkermalloy.com



27TH STREET

