

RAFE B. EVANS
Vice President

WATERFRONT RESTAURANT AVAILABLE

Space Facts

<i>Space Address</i>	164 Kent Ave., between N 4 th and N 5 th Street
<i>Neighborhood</i>	Williamsburg, Brooklyn
<i>Approximate Size</i>	5,178 sf + 2,427 sf basement, with additional outdoor seating
<i>Rent</i>	\$50 psf

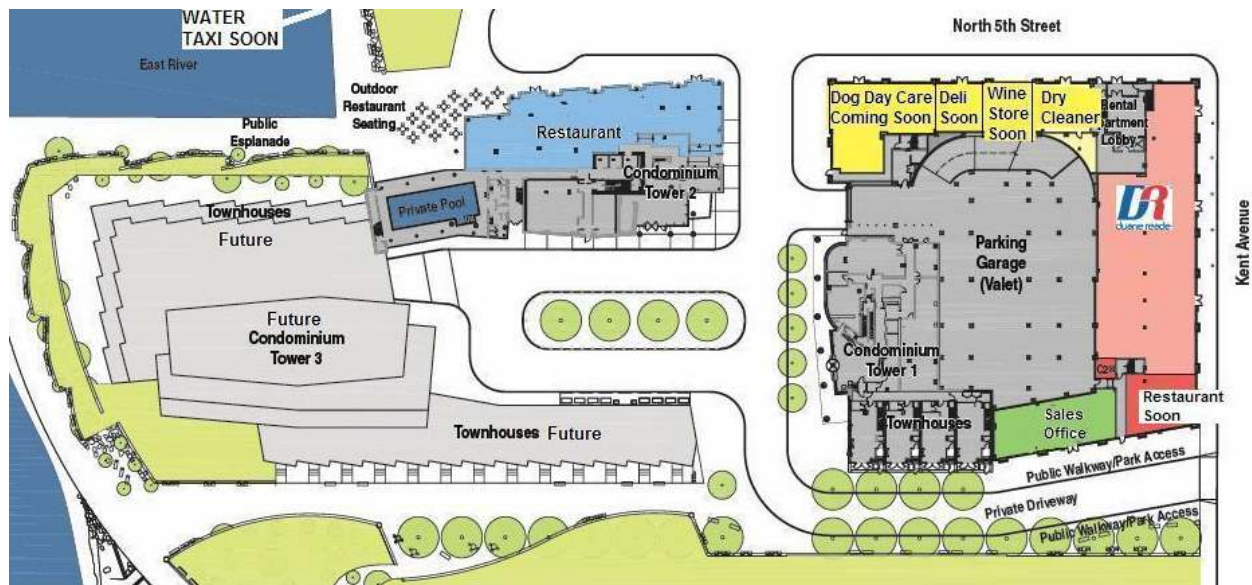
Note

- At the base of a new luxury waterfront condo development with 943 total residential units
- Adjacent to the water taxi
- Along the public esplanade that spans up the Williamsburg waterfront

Contact

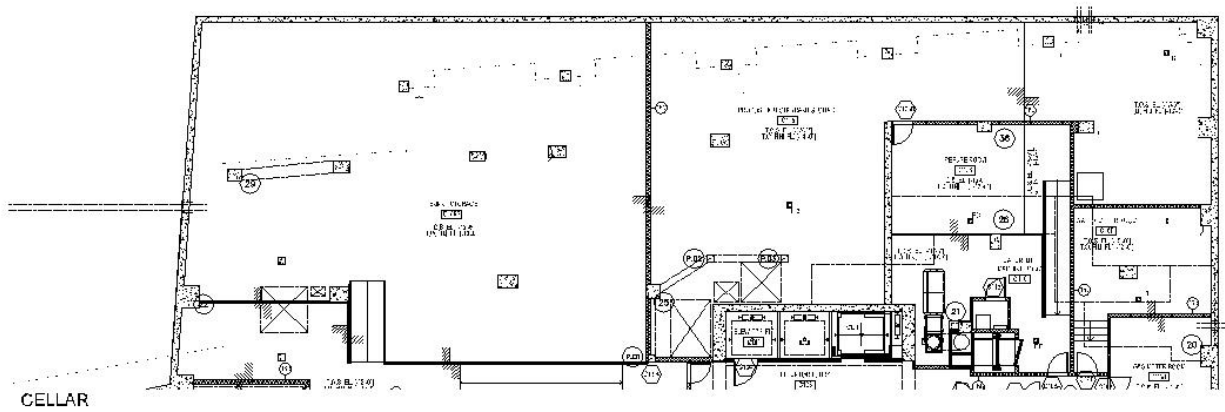
Rafe B. Evans

212-712-6186

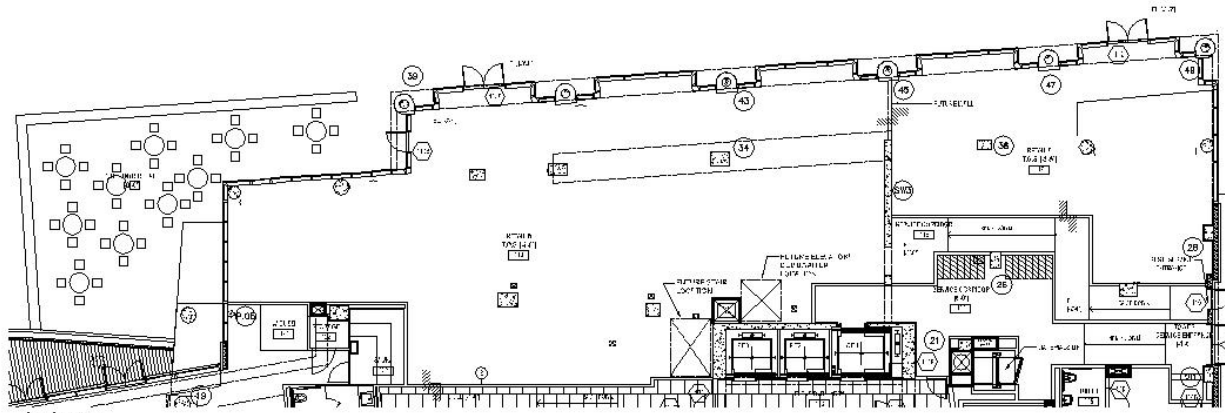


ALL INFORMATION IS SUBJECT TO, ERRORS, OMISSIONS, CHANGE, OR WITHDRAWAL WITHOUT NOTICE. Dimensions are approximate. One half of a commission is payable in accordance with our rate schedule to procuring broker executing our brokerage agreement, provided that a lease is fully consummated as described in said agreement. Our commission rate schedule is available upon request.

101 West 70th Street • New York, NY 10023 • 212 712.6186
Cell 917 701.4059 • Fax 212 724-6386 • rafeevans@walkermalloy.com



CELLAR



GROUND