

RAFE B. EVANS
Vice President

AVAILABLE

Space Facts

<i>Space Address</i>	220 West Broadway, between Franklin & White
<i>Neighborhood</i>	TriBeCa
<i>Approximate Size</i>	995 sf + 1,340 sf basement + outdoor café space
<i>Approximate Frontage</i>	30 feet
<i>OK Uses</i>	Wine bar, restaurant, etc
<i>Formerly</i>	Franklin Street Station Cafe

Rent Facts

<i>Rent</i>	\$15,000 / month
-------------	------------------

Note

Charming, high ceilings, vented space
Highly visible at three way intersection overlooking #1 subway station
Outdoor café available separately

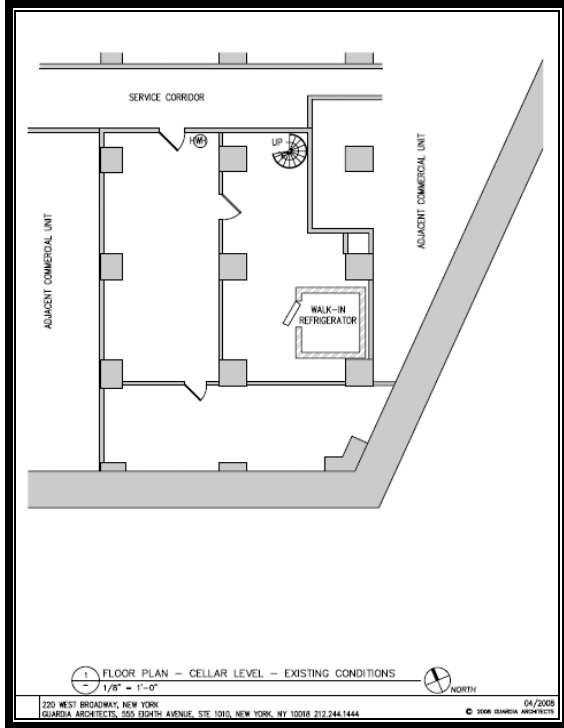
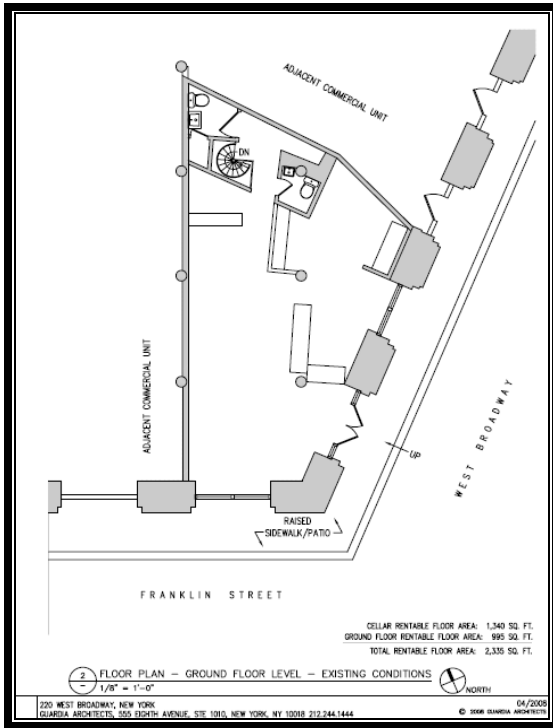
Contact

Rafe B. Evans



ALL INFORMATION IS SUBJECT TO, ERRORS, OMISSIONS, CHANGE, OR WITHDRAWAL WITHOUT NOTICE. Dimensions are approximate.
One half of a commission is payable in accordance with our rate schedule to procuring broker executing our brokerage agreement, provided that a lease is fully consummated as described in said agreement. Our commission rate schedule is available upon request.

101 West 70th Street • New York, NY 10023 • 212 874.1686 x102
Cell 917 701.4059 • Fax 212 873.0925 • rafeevans@walkermalloy.com



Walker's Restaurant	Varick St.	NYFD	Construction	W. Broadway	Columbine Cafe
		Laundry	The Bubble Lounge		Rosario's
		Pecan Bakery	AVAILABLE		J. Marc Restaurant
Franklin Street Development		Franklin Street Subway: 1 Train			Churascaria
					Tribbles
					VinoVino
					Centrico